



**DE MONTFORT
UNIVERSITY**
LEICESTER

International Guide

Contents

Why choose DMU Leicester	3
What makes us special	5
Study at DMU London	7
Leicester city	9
Discover our courses	11
Living in the UK	13
Fees	15
Scholarships	17
Accommodation	19
How to apply	23
Campus Map	25





Why choose De Montfort University (DMU) Leicester?

Academic excellence

At DMU, you'll experience a career-focused education, delivered by supportive staff, that will help you to reach your ambitions.

As a university **rated five star by QS Top Universities**, we deliver outstanding education including our innovative block teaching approach*. This allows you to focus on one subject at a time, with regular assessments throughout the year (rather than all at once) and a better study-life balance so that you can enjoy all that university life has to offer.

90% of the block teaching students we surveyed said they enjoy studying one module at a time and 86% of students felt singular focus supported their work-life balance and lifestyle.

DMU has around 170 courses accredited by professional bodies, so your **learning is informed by current industry practice** and prepares you for your career. Many of our academic experts are active researchers and your studies will benefit from the latest research findings.

*While the majority of our courses use block teaching, there are variations based on the requirements of certain courses.

Best careers team in the country

Our Careers Team won **Employability Team of the Year at the TargetJobs National Graduate Recruitment Awards (2024)** and students rated us as the 16th best university for employability in the Uni Compare rankings. You'll benefit from guaranteed work experience opportunities, our links with big employers, and lifelong careers support after graduation to help you achieve your goals.

First-class campus and facilities

DMU is proud to offer an exceptional environment for students to live, learn, and thrive. **Ranked 2nd in People & Planet's University League Table for our commitment to environmental sustainability**, we take pride in leading the way towards a greener future. Student reviews and independent data from Uni Compare rankings placed us as the **25th best university in the UK**. We've also been appointed Chair of the hub for the United Nations' sustainable development goal 11 - sustainable cities and communities. We'll work with others to address issues such as affordable housing, renewable energy and air pollution.

Our campus is a **safe place to live and study** that's close to accommodation, shops, cafés and restaurants while also being just a **short walk from the city centre** and everything it offers. With a leisure centre, fully-equipped library, plenty of places to eat and socialise, award-winning buildings, and first-class facilities our campus offers you everything you need to make the most of university life and start your journey towards your dream career.

Leicester – a city for students

As DMU is situated in the heart of Leicester, you'll experience rich culture and diversity. **Leicester is an affordable place to live** and has been voted one of the top 15 best student cities in England (StudentCrowd, 2023) as well as the best city in the East Midlands to live and work (Good Growth for Cities Index, 2024) and the second most diverse city in the UK (Diversity UK, 2023). You'll also be well-networked with **easy links to cities such as Birmingham, Nottingham and London**.

Find your new home

You can be assured of **guaranteed accommodation** when you start at DMU.

Our modern accommodation halls — voted **11th best in the UK** by students on Uni Compare — are within easy walking distance of campus with a range of prices and contract durations. All are self-catered and fully furnished, with options for en-suite bathrooms, on-site gyms and social spaces. You can even pick your own room.

Find your people, discover new places

With more than 100 groups, societies, sports teams and the students' union, DMU has something for everyone. You can also volunteer on inspiring, rewarding and worthwhile projects such as supporting disadvantaged communities locally and around the world. There are also course-related **international opportunities** such as summer schools, internships and placements.

Research with impact

Many of our academics are **active researchers whose work has a positive impact on people's lives and society**. With a research-informed curriculum, your studies will benefit from the latest findings and you will develop your critical thinking – a skill valued by employers.

What makes us special?

You'll read lots in here about why we think we're special but you don't just have to take our word for it. Current and former students, independent organisations, and awarding bodies have all acknowledged the things we do really well. We're immensely proud of all of the awards and rankings but it is the accolades based on student votes that really mean a lot to us – and show you what real students think of their experience with us.

These awards show how we excel at making the university experience something special for students. From careers support and sustainability, to race equality and autism support, we focus on more than just excellent teaching.

As a DMU student, you will be part of an inclusive and welcoming community where you will receive an outstanding education at a five star rated university, helping you to achieve your ambitions.

An 'Excellent' Five Star University



Rated by QS Top Universities for our teaching, facilities, employability, global outlook and more.



The First University to Achieve a Silver Race Equality Charter Award

Our work to improve equality and diversity, challenge racism and build an anti-racist community earned us the award.



1st for Overall Average Student Satisfaction

based on the main themes of arrival, living, learning, and support in the 2024 International Student Barometer rankings.



1st Globally for Worship Facilities

Ranked 1st by students for worship facilities in the 2024 International Student Barometer rankings.



1st in the UK for Overall Learning

Ranked 1st by students for overall learning in the 2024 International Student Barometer rankings.



1st in the UK for Career Goal Preparation

Ranked 1st by students for career goal preparation in the 2024 International Student Barometer rankings.

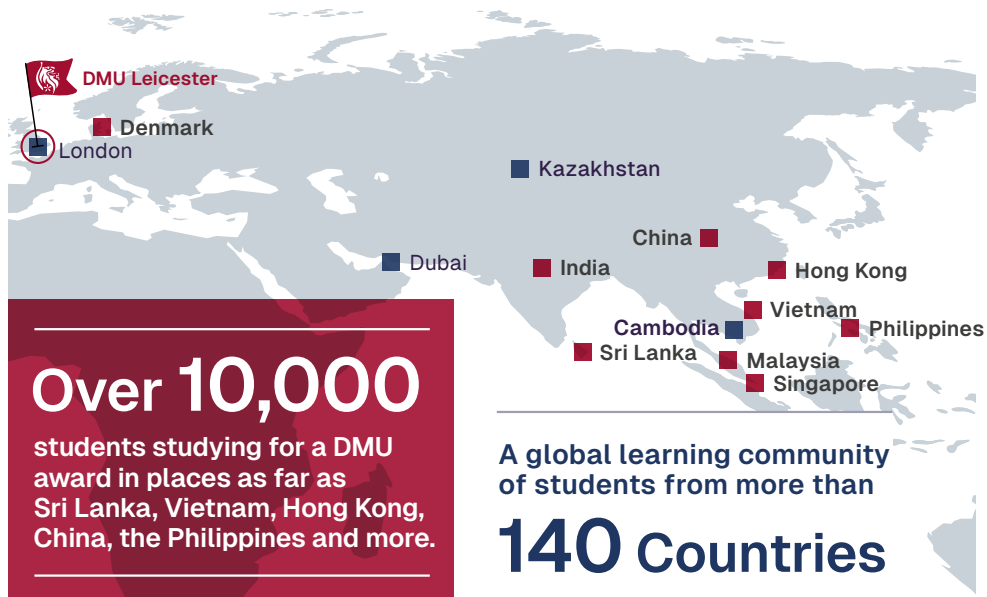


Study at DMU London

Learn business leadership for a future with purpose

- Courses embedded with employability for real-world success
- Become a future leader in sustainable business
- 150 years of innovative education

Scan QR code to visit London Home



■ DMU London

Opening in September 2025, DMU London will be one of the newest campuses in the City. It offers postgraduate students the chance to gain the skills and knowledge to lead organisations to a more sustainable future. With a campus based in the global hub for business, and employability embedded into the curriculum, students will benefit from opportunities to make connections, gain industry experience and learn from the latest research with a focus on sustainable business practices.



 dmu.ac.uk/london

Leicester – a city for students

When you're not busy learning, you'll be busy living student life, and Leicester has everything you're looking for and more.

A big city on your doorstep

We're a campus-based university in the city centre, so everything Leicester has to offer is right on your doorstep. We're one of the few universities in the UK where

you'll benefit from a being on a campus and in the city.

A city with links

Leicester's central location means you can hop on a train and get to cities such as London, Birmingham and Nottingham in approximately an hour or less. There are also easy links to many UK airports by train, bus or coach.

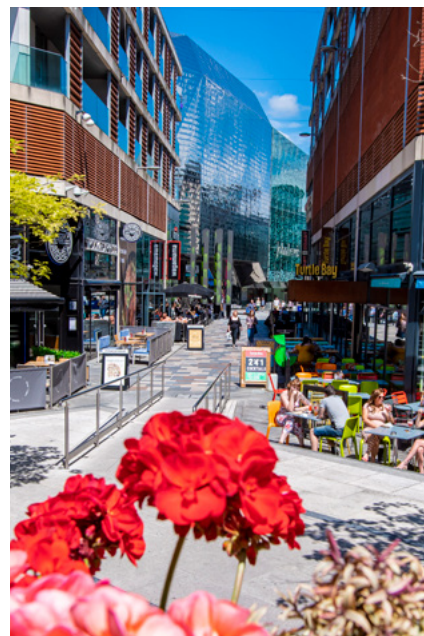
Affordable, vibrant and diverse

Leicester is an affordable place to live and is known for its welcoming, student-friendly vibe. With its cultural diversity, lively nightlife and rich history, Leicester has been **named the sixth most vibrant city in the UK**, putting it ahead of the likes of Manchester, Liverpool and Birmingham (Top Cities Vibrancy Report, 2023). It has also been voted the **best city in the East Midlands to live and work** (Good Growth for Cities Index, 2024) and the second most diverse city in the UK (Diversity UK).

A city for your career

Once you've graduated, Leicester is an excellent place to find work and has been **named among the country's start-up hotspots** (Capital on Tap report, 2021).

It's home to major employers such as Caterpillar UK, Dunelm, E.ON, Europcar Group, IBM, Mattioli Woods, Next and PepsiCo. Research by London Economics shows that DMU graduates who continue their career in the East Midlands are earning around a third more than those who do not go to university.



Discover our courses

Undergraduate and Postgraduate subject areas:

Arts, Design and Humanities

- Architecture and the Built Environment
- Creative Design
- Design
- Fashion and Textiles
- Humanities
- Performance and Arts Management
- Visual Arts

Business and Law

- Accounting and Finance
- Business, Entrepreneurship and Human Resource Management
- Economics
- Law
- Marketing

Computing, Engineering and Media

- Computer Science and Informatics
- Engineering
- Media
- Music

Health and Life Sciences

- Health Sciences and Allied Health Professions
- Nursing and Midwifery
- Pharmaceutical, Cosmetic and Forensic Science, and Social Science



Scan the QR code to view undergraduate courses at DMU



Scan the QR code to view postgraduate courses at DMU

Postgraduate study at DMU London Courses

- Global MBA with Responsible Leadership
- International Business and Sustainability Management MSc
- Responsible Data Analytics MSc



Scan the QR code to view courses for DMU London



The Best Careers Support

DMU's Careers Team won Employability Team of the Year at the TargetJobs National Graduate Recruitment Awards for helping students reach their ambitions.



Living in UK

Essentials:

Mobile phone plan	£10 - £35 (monthly)
Broadband internet	£40 - £50 (monthly)
Annual TV licence	£169.50
Electricity (private apartment)	£50 - £100 (monthly)
Water (private apartment)	£30 - £40 (monthly)
Groceries	£300 - £400 (monthly)
Toiletries	£10 - £20 (monthly)
Laundry	£2 - £5 per load
UK bank current account set up	FREE

All costs mentioned are approximate for students living in Leicester and should be used as a guide only. Make sure to conduct your own research and take into account your personal preferences and budget style.

Students can apply for a TOTUM student card for savings on dining out, coffee, travel, activities, online and in store shopping from a wide range of retailers, and much more. Memberships starting from £14.99 per year. www.totum.com

Currency converter

To work out the costings in your local currency, you can use the currency converter here www.xe.com

Costings correct as of September 2024.

For study at DMU, the monthly amount required by the UKVI is £1,136 for each month of your course, up to £10,224 for a course lasting nine months or more.

As a student, you can expect to budget around £600 to £800 per month for living expenses, including accommodation, food, travel, and social activities, though this can vary depending on your lifestyle. Leicester is the fourth cheapest city in the UK for average monthly rent (Natwest Student Living Index 2024).



Scan the QR code to visit our visa advice page



Fees

Undergraduate tuition fees

Subject area	Fees
Art, Design and Humanities	£16,250
Business and Law	£16,250
Computing, Engineering and Media	£16,750
Health and Life Sciences	£16,750

Should students undertake a paid placement year as part of their studies only a placement fee of £1,850 is applicable.

International students studying on a student exchange programme partner university for the full academic year: £1,385.

Postgraduate tuition fees

Subject area	Fees
Art, Design and Humanities	£16,300
Business and Law	£18,450
Computing, Engineering and Media	£18,100
Health and Life Sciences	£17,300

DMU London Postgraduate tuition fees

Subject area	Fees
Global MBA with Responsible Leadership	£21,300
International Business and Sustainability Management MSc	£19,450
Responsible Data Analytics MSc	£19,450

Scholarships

DMU International Scholarships

Courses starting September 2025.

We are proud to present the international scholarship awards for 2025/26, which rewards eligible prospective international students joining a full-time or part-time undergraduate and postgraduate taught degree at De Montfort University in September 2025. Through our Empowering University strategy, DMU strives to provide international students with access to the international jobs market through a world class education.

Global Access Scholarship – Undergraduate

A recurrent £2,000 Global Access Scholarship is awarded automatically for all students entering Level 4 (Year 1) undergraduate study level who pay the minimum deposit fee before the deposit payment deadline. The £2,000 award is applicable and recurrently applied for further years of study.

A £2,000 Global Access Scholarship is awarded automatically for all students entering Level 5 or 6 (Year 2 or 3) undergraduate study who pay the

minimum deposit fee before the deposit payment deadline. Applicable for the first year of study only. Terms and conditions apply.

Global Access Scholarship – Postgraduate

Students commencing postgraduate taught study at DMU in September 2025 are automatically awarded an international scholarship should you pay the deposit fee before the deposit deadline. The scholarship is awarded for postgraduate taught courses as below depending on the Faculty where the course is studied.

DMU London Scholarships

Scholarships of up to £3,000 for the MBA Global with Responsible Leadership programme and up to £2,500 for MSc programmes (International Business and Sustainability and Responsible Data Analytics) in London.



Scan the QR code to see scholarships and funding at DMU London.

Scholarship amounts are as follows:

Subject area	Scholarship
Art, Design and Humanities	£2,000
Business and Law	£3,000
Computing, Engineering and Media	£3,000
Health and Life Science	£3,000

Global Partnerships Scholarship

The Global Partnerships Scholarship is a merit-based award ranging from £8,000 to a full scholarship for students originating or transferring from one of our global academic partners. This could be one of our overseas campuses or any institution where DMU has a partnership supporting student mobility into the DMU Leicester campus (see website for list of eligible institutions). The scholarship is assessed on an application basis with a defined criteria for students who are applying for any level of an undergraduate degree.

1 x Full Scholarship

8 x £8,000 Scholarship

Applications will be considered for the Global Partnerships Scholarship up to 18 July. Terms and conditions apply to all scholarship offerings.



Scan the QR code to visit global partnerships scholarships

A+ rated accommodation

Moving into your own place is a big deal. You can choose from seven halls of residence at the Leicester campus which are ranked 11th best in the country and only minutes from the campus and city centre.

We offer every new international student guaranteed accommodation in their first year in one of our halls that consist of flats with between 3 and 10 bedrooms and are self-catered with a shared kitchen. The rooms are modern with internet access and many have en-suite bathrooms. Some halls have communal social spaces and on-site gyms. Single-sex flat options are available and there's also an opportunity to choose your own room.

Booking through DMU is the recommended option as the cost of internet, utility bills (electricity and water) and contents insurance are included.

Not only will you meet new friends but you will feel safe and comfortable in your new home as halls have on-site or on-call security, on-site managers, and CCTV or electronic door entry.

All of our modern student accommodation is within easy walking distance of our campus and the city centre, with

Leicester's many attractions only minutes away.

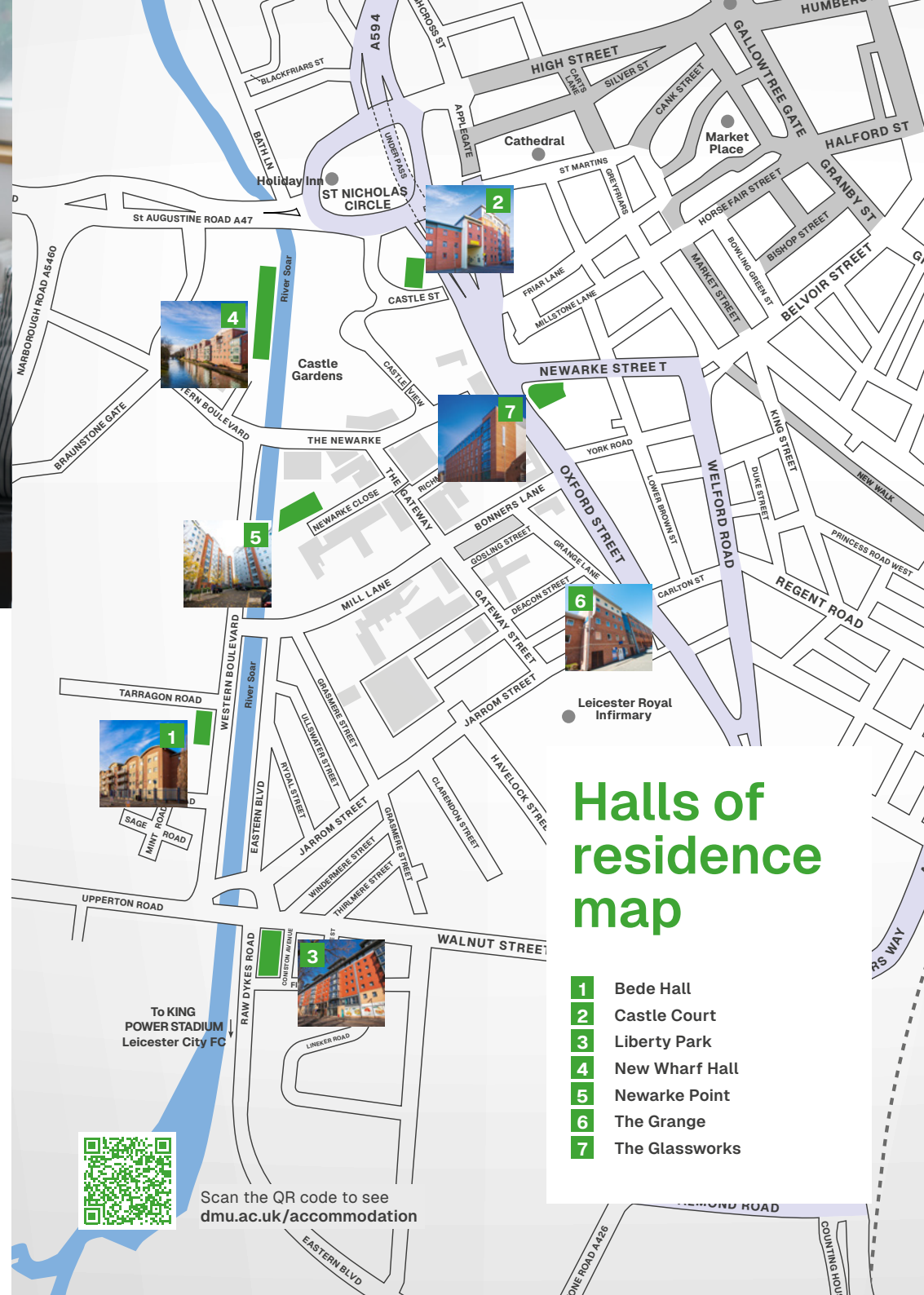
All our halls are self-catered, giving you the freedom to come and go as you please, and are furnished, with DMU providing a bedding pack including a duvet, pillow and bedsheets.

International students have the option to begin their accommodation contract ahead of International Welcome Week.

If you require any further assistance please contact the accommodation team directly at:

E: accommodation@dmu.ac.uk

Our halls of residence are signed up to the Universities UK student accommodation code of practice and our privately managed halls are signed up to the Accreditation Network UK/Unipol national code so you can be sure of a professional service.



Halls of residence map

- 1 Bede Hall
- 2 Castle Court
- 3 Liberty Park
- 4 New Wharf Hall
- 5 Newarke Point
- 6 The Grange
- 7 The Glassworks

Accommodation Leicester Campus

Accommodation name	Walking distance to campus	2024/2025 cost	Type of room available	Contract length
Bede Hall	Six minutes	£95 per week Total: £3,908.59	Standard	41 weeks and one day
Castle Court	Six minutes	£145 per week Total: £6,235	Classic en-suite	43 weeks
The Glassworks	Five minutes	£161 per week Total: £6,923	Standard en-suite	43 weeks
Liberty Park	Nine minutes	£137.000 per week Total: £5,891	Premium en-suite	43 weeks
New Wharf	Six minutes	£115 per week Total: £4,731.43	Standard	41 weeks and one day
Newarke Point	Three minutes	£145 per week Total: £6,235	Classic en-suite	43 weeks
The Grange	Six minutes	£132.30 per week Total: £5,688.90	Classic en-suite	43 weeks

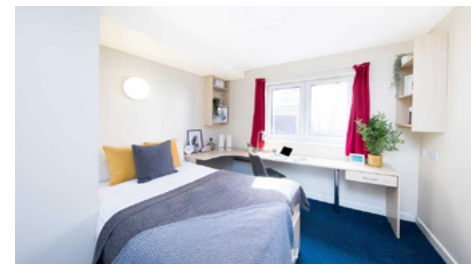
Prices and contract lengths are for 2025/26 entry.



Scan the QR code to see information about DMU accommodation.



Bede Hall



Castle Court



Liberty Park



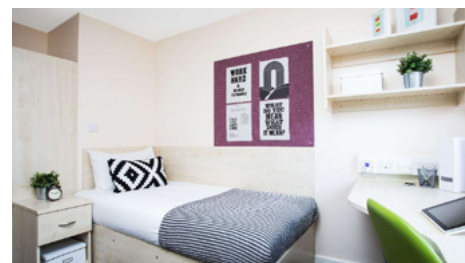
Newarke Point



The Glassworks



New Wharf



The Grange





How to apply

To apply to study an undergraduate or postgraduate course (full-time or part-time) you can apply using the DMU Online Portal or through submitting a paper application to our regional teams.

What to include

Full details of the entry requirements can be found on our online course pages

The following should be submitted with your application:

- Copy of your passport
- Copies of your academic transcripts

- Copies of your degree or diploma certificates
- Your personal statement (if you're applying for a pharmacy course, please include your GPhC number)
- Evidence of English ability (e.g IELTS)
- Some of our creative courses may ask for a portfolio

*Note: You can apply without submitting all of these documents and will still be eligible to receive a conditional offer

Credibility assessment

Certain nationalities that have a higher likelihood of unsuccessful visa applications will be invited into a process to confirm that you are a genuine student and are able to demonstrate this when applying for your student visa.

During this process, you will be evaluated on your abilities to demonstrate your knowledge of studying at DMU as an international student on topics such as:

- Your course
- Living in the UK

- Accommodation
- Financing your studies

The process will be detailed in our offer letter and our regional teams on hand when and if you are required to engage in this process.



Scan the QR code for guidance on how to approach

Leicester Campus map

- 1 Art Factory (DMU International College)
- 2 Bede Hall (hall of residence)
- 3 Bede House
- 4 Campus Centre Building
- 5 Castle Court (private hall of residence)
- 6 Castle Street (private hall of residence)
- 7 Chantry Building
- 8 Clephan Building and Courtyard Studios (Arts, Design and Humanities; Computing, Engineering, Media and The Centre for English Language Learning)
- 9 DMU Museum (based within Hawthorn Building)
- 10 Edith Murphy House (Health and Life Sciences)
- 11 Eric Wood Building and Learning Zone
- 12 Estates Development Building
- 13 Estates Services Building, including Security Office
- 14 Food Village
- 15 Forensic Science Facility
- 16 Gateway House (Computing, Engineering and Media, Student Gateway)
- 17 Hawthorn Building (Health and Life Sciences)
- 18 Heritage House (Health and Life Sciences)
- 19 Hugh Aston Building (Business and Law)
- 20 Innovation Centre
- 21 John Whitehead Building
- 22 Kimberlin Library
- 23 Leicester Castle Business School
- 24 Bede Island (Computing, Engineering and Media)
- 25 Liberty Park (private hall of residence)
- 26 Main campus car park - staff and visitors
- 27 Merlin Heights (private hall of residence)
- 28 Mill Studios (Computing, Engineering and Media; Health and Life Sciences)
- 29 Newarke Point (private hall of residence)
- 30 Newarke Street (private hall of residence)
- 31 New Wharf Hall (hall of residence)
- 32 PACE Building (Performance Arts Centre for Excellence; Arts, Design and Humanities)
- 33 Portland Building (Arts, Design and Humanities and Health and Life Sciences)
- 34 Queen's Building (Computing, Engineering and Media)
- 35 Stephen Lawrence Research Centre
- 36 Leicester Gallery
- 37 The Glassworks (private hall of residence)
- 38 The Grange (private hall of residence)
- 39 The Greenhouse
- 40 The Philip Tasker Building (DMU International College)
- 41 The Queen Elizabeth II Diamond Jubilee Leisure Centre
- 42 The Venue@DMU
- 43 The Watershed
- 44 The Yard (Business and Law)
- 45 Trinity House
- 46 Vijay Patel Building (Arts, Design and Humanities, the Confucius Institute and Leicester Gallery) and Riverside Cafe
- M The Magazine Gateway
- Pedestrianised area
- Catering Outlets



Scan QR code for our virtual tours





You can find out more information about the ambassador platform [here](#).



You can find a host of information and guidance to support both agent and applicant by visiting the DMU International webpage, you will also find an FAQ section [here](#).



You can also get further advice and support from the Visa Advice team [here](#).

With each new intake, the credibility process may change slightly, if any changes do take place, DMU will update and advise. So please keep up to date with all communications sent from DMU International and DMU Regional Teams. Updates will also be displayed on the **DMU International webpage**.