

# Student Diversity Report

## 2009/10 (internet version)

### Strategic Planning Service

Please note: the retention rate of BME students in 2008/09 has been revised to 84% (previously 77%, see page 7)

#### 1. Executive Summary

This report fulfils our statutory duty to monitor student activity against the four diversity categories gender, age, ethnicity and disability. Below is a summary of some of the key observations which the Equality and Diversity Committee could use as a basis for developing objectives.

##### **The Student Body (section 3.1)**

In DMU, the proportion of young postgraduates (21-24) is increasing while 64% of all part time students were 30 years and above in 2009/10. Around 40% of students have a black or minority ethnic (BME) background and the proportion of students known to have a disability is 15%.

##### **Applications, Accepts and New Enrolments of FT UG students (section 3.2)**

Data based on 2010/11 recruitment cycle. Applicants with a disability have decreased over the last 3 years. Conversion analysis shows that students with a learning difficulty do not disclose their disability at the application stage, while at enrolment, this information is revealed.

##### **Tariff Points on Entry (section 4.1)**

The average tariff points on entry for BME students has increased significantly over the last 3 years to 235 tariff points in 2009/10, however this is below the average for non BME students which is at 248 tariff points.

##### **Retention, Progression and Drop-out (sections 4.2 to 4.4)**

The retention rate for BME students has decreased over the years and 10.5% of Black British – African students dropped out before the end of the year in 2009/10.

##### **Good Honours - 1<sup>st</sup> and 2ii degree classification (section 4.5)**

Nationally, the attainment gap between white qualifiers who obtained a good honours degree and that of BME qualifiers is around 18%. The gap is higher in DMU, where around 60% of white qualifiers achieve good honours compared to between 30%- 40% of BME students.

## 2. Introduction

This report provides numbers, proportions and related trends for key student areas of focus by the four diversity categories gender, age, ethnicity and disability.

### 2.1. Report Structure

The areas of focus cover the statutory duty to monitor the student life cycle and include:

- the profiles of students enrolled at DMU – the 'student body'
- the recruitment profiles and conversion rates for applications to accepts and applications to new enrolments
- the profile of students by average tariff points on entry
- the profile of students for retention, progression and drop-out
- the profile of students achieving a 1<sup>st</sup> or 2i classification on their degree (good honours)

This report is intended for the Equality and Diversity Committee (EDC) to help make inform decisions and develop policies.

This report takes national statistics from the Heidi - the Higher Education Information Database for Institutions. For more information follow this link: <http://www.heidi.ac.uk/>.

This report contains summary analysis for the areas listed above. The charts vary throughout the report and are aimed at demonstrating the different 'views' that are possible with diversity data. The charts are explained more in the accompanying presentation (contact SPS).

Detailed data tables containing institution totals are contained in the appendices. These tables can be manipulated on the EIP to view the data by faculty and/or department, see Staff Portal/Systems/Reporting/Enterprise Information Portal or contact SPS for more information.

National data is available – see benchmarking section for further information.

### 2.2. Parameters

The main data source for this report is the student HESA data as it is the most accurate and reliable source. The data in this report and the tables contained in the appendices can be used to inform the equality schemes. HESA data allows for national comparisons and benchmarking with similar HEIs. The whole student population has been included for the enrolments profile section, while the tariff on entry, retention, progression, drop-out and good honours data varies depending on the area of focus – full explanations of the student selected to analyse are presented in the report.

Only full time undergraduate students from the UK have been analysed for the recruitment profiles and conversion section which shows data up to 2010/11. The data source for this is QLS as it is the most up-to-date and allows for the conversion analysis.

National data is available from the UCAS website and have been referenced where applicable.

### 2.3. Benchmarking

Benchmarking will become essential once DMU has completed development of its key performance indicators to monitor the Strategic Plan. This report can help in the development of equality performance indicators which can be monitored and updated on an annual basis.

HESA data should be the source for any external data returns and benchmarking. The online data tool 'heidi', produced by HESA, can be utilised to generate annual benchmarking figures. If you would like to produce benchmark HEI groups based on similar student profiles and would like access to 'heidi', please contact SPS.

### 3. Recruitment Profile – the ‘student body’

#### 3.1.Total Enrolments

##### 3.1.1. Gender

Nationally during the past three years, the percentage of male students increased, from 42.9% to 43.4%. (Heidi)

Figure 1: DMU Gender Profile

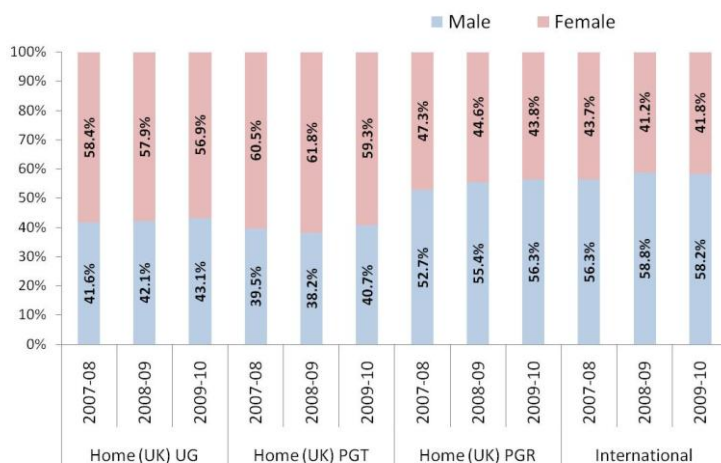


Figure 1 shows that in DMU the home (UK) undergraduate male population increased from 41.6% to 43.1%,

Home (UK) postgraduate taught male students increased from 39.5% to 40.7% while home (UK) postgraduate research male students increased from 52.7% to 53.6%.

International (overseas and EU) male students increase from 56.3% to 58.2%

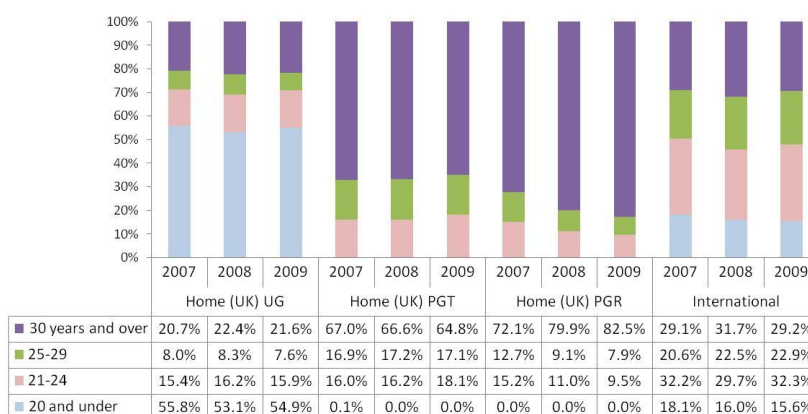
##### 3.1.2. Age

Nationally over the past three years, the age profile of students in higher education has remained the same, with 34% of students aged 20 and under (young) and 66% 21 or over (mature) when they start the year of study. (Heidi)

Figure 2 shows that in DMU, the proportion of young home (UK) undergraduates has slightly decreased over the same period.

The proportion of students aged 20 and under went from 55.8% in 2007/08 to 54.9% in 2009/10, while those that are 30 years and over went from 20.7% in 2007/08 to 21.6% in 2009/10.

Figure 2: DMU Age Profile Chart



In contrast, the profile of home (UK) postgraduate taught students shows they are getting younger as the proportion aged 21-24 on entry increased from 16% to 18% over the period, while those aged 30 and over decreased from 67% to 65%.

Home (UK) postgraduate research students are getting older with 83% aged 30 and over when in 2009/10. The profile of international students shows they are getting older with those aged 20 and under on commencing their studies decreasing from 18.1% in 2007/08 to 15.6% in 2009/10.

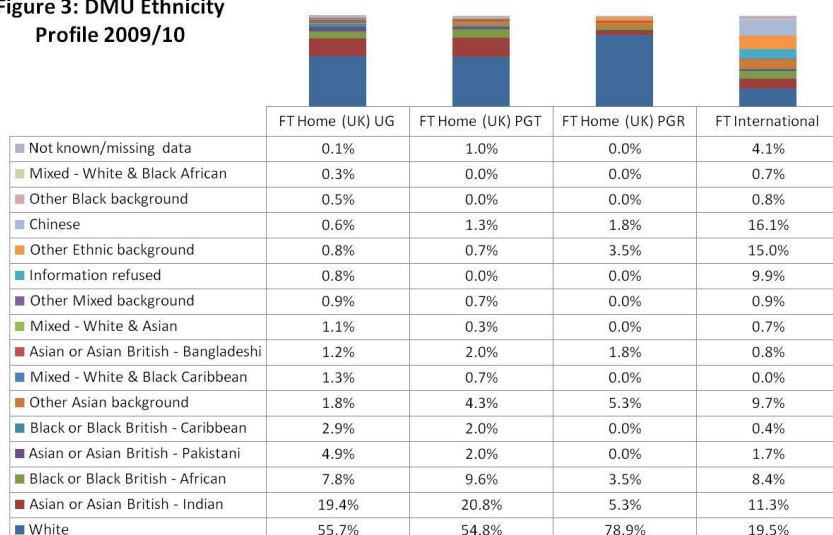
Nationally, part-time students were generally older than full-time students. Nearly half (45.4%) of all part-time students were aged 36 and over compared with only 5.1% of full-time students. In DMU, the proportion of part time students was 29% in 2009/10 of which 64% were aged 30 and over.

### 3.1.3. Ethnicity

Nationally, over the past three years, the proportion of black and minority ethnic (BME) students has increased from 17.2% in 2007/08 to 18.1% in 2009/10. (heidi)

In DMU, the proportion of total BME students grew from 38% in 2007/08 to 40.3% in 2009/10. DMU has a significantly higher proportion of BME students compared to the sector.

**Figure 3: DMU Ethnicity Profile 2009/10**



Focussing on the latest year, figure 3 illustrates the proportional differences by study level for full time students only.

Home students are mainly white, while international students are more diverse.

The 'other ethnic background' category could include Arabic which would explain the proportionally high value in international students as there were a high number of enrolments from Saudi Arabia in 2010/11.

### 3.1.4. Disability

Nationally, over the last 3 years, the proportion of students known to have a disability has stayed the same at 7.8%. (Heidi)

In DMU, the proportion increased from 14.2% in 2007/08 to 15.1% in 2009/10.

The national proportion of students known to have a disability and declared that they have a specific learning difficulty e.g. dyslexia increased from 46.3% in 2007/08 to 48.2% in 2009/10. (Heidi)

In DMU, the value increased from 37.5% in 2007/08 to 42.2% in 2009/10.

Focussing on this area for DMU in 2009/10, the proportion of home (UK) undergraduates was 45.4%, while for home (UK) postgraduate taught is was 22% and postgraduate research was 27.3%.

There has been a significant increase in international students known to have a disability declaring that they have a specific learning difficulty over the past 3 years, increasing from 18.2% to 27.8%. However, this could be attributed to better collection methods.

## 3.2.Applications, Accepts, New Enrolments Profiles and Conversion

The following analysis looks at the profile of home (UK) students being recruited to full time undergraduate programmes only. The data source is QLS (DMU internal data system).

Conversion rate analysis from applications to accepts and applications to new enrolments highlights differences between groups which could indicate possible discrimination in recruitment.

New Enrolments are at 31<sup>st</sup> October each year, hence students that arrive after this date are not included. Additionally, if a student discloses a disability after this date then it is not captured, refer to total enrolments section for a complete profile.

### 3.2.1. Gender

More females apply to study at DMU than males (57% females and 43% male). Both genders accept DMU offers at a similar rate (1 in 3 applications is an accept). Approximately 5 applications lead to an enrolment for females and every 4 in males.

### 3.2.2. Age

Mainly younger students apply to study full time undergraduate courses in DMU (20 and under). Over the past 3 years the proportion of younger applicants has increased, which has resulted in an increase in the proportion of young new full time undergraduate from 60% in 2008/09 to 69% in 2010/11.

### 3.2.3. Ethnicity

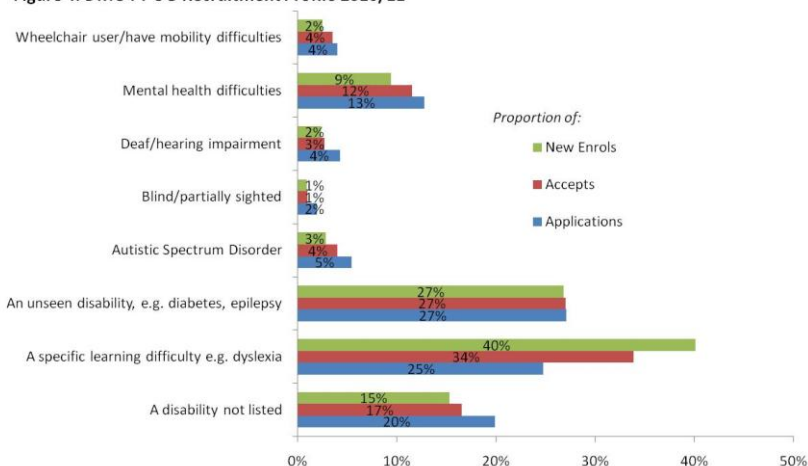
UCAS treat applicant ethnicity data as 'sensitive' as it could be used to discriminate against entry into the University. Sensitive data from UCAS, at applications stage, does not enter QLS; however the information does enter the system once they have accepted an offer for a place.

In 2010/11, 40% of applications were from non-white students, of which 13% were Asian British - Indian and 10% were Black British – African. DMU has a high proportion of new enrolled BME students, with 17% Indian and 9% African.

The full breakdown of ethnicity profiles for recruitment from QLS and UCAS (for 2010/11 entry) are contained in the appendices. Additional years UCAS data is available on request from SPS.

### 3.2.4. Disability

Figure 4: DMU FT UG Recruitment Profile 2010/11



The number of applications from students with a disability has decreased over the last 3 years, from 10% in 2008/09 to 5% in 2010/11. This could be the result of increased tariff point requirements over the same period.

Figure 4 shows the profile of students with a disability in DMU at the end of the 2010/11 recruitment cycle.

The chart illustrates how students that have a learning

difficulty do not disclose their disability at the application stage, while at enrolment, this information is revealed.

The disproportion occurs for this type of disability only, while all other disability types show the inverse which is correct due to the larger pool of students at the application stage.

## 4. Academic Performance Profile

### 4.1. Tariff Points on Entry

Increasing the tariff requirements for new students and hence increasing the quality of intake has been the focus for DMU over the last few years.

The following analysis looks at the profile all new students and their average tariff on entry to DMU. National data on entry tariff by student profile is not available.

#### 4.1.1. Gender

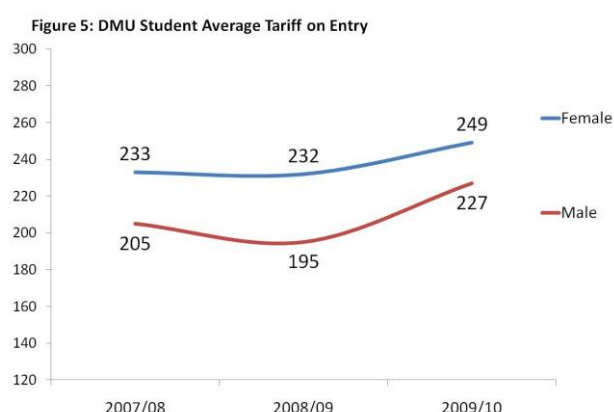


Figure 5 illustrates how the average tariff points on entry have increased for females and males over the past 3 years at DMU.

The 'tariff gap' between the genders has decreased over the period with the gap at 28 in 2007/08 reducing to 22 in 2009/10.

#### 4.1.2. Age

Analysis by age shows that older students (30 and over) have a lower average tariff points on entry than younger (20 and under).

The average tariff has increased over the last 3 years for younger students from 228 in 2007/08 to 248 in 2009/10. Older student's tariff has also increased from 193 in 2007/08 to 207 in 2009/10.

#### 4.1.3. Ethnicity

The average tariff points on entry for BME students increased significantly from 196 in 2008/09 to 235 in 2009/10. The tariff for white students increased from 228 to 248 in the same period.

The 'mixed' ethnicity group of students has seen the highest increase in average tariff rising 58 tariff points over the last 3 years.



#### 4.1.4. Disability

The average tariff for students that have declared they have a disability increased from 209 in 2007/08 to 250 in 2009/10. (low numbers – see table in appendices for context)

A major proportion of students with a disability have 'A specific learning difficulty e.g. dyslexia' or 'An unseen disability, e.g. diabetes, epilepsy, asthma'. Both groups of students have seen a 20 points average tariff points rise over the period.

### 4.2. Retention

Retention is a measure of students that are still actively studying on any programme year.

The following analysis looks at the profile of all first degree students and whether they are retained from one year to the next. This analysis focuses on the movement into the next academic session and doesn't consider any other years. First degree students are undergraduate students on a degree level programme.

The data analysed is from 2006/07 to 2008/09 only because of the retention calculation method – see the retention and progression report for more details. National data on retention by student profile is not available.

The measure could be used as an indication of support levels for certain groups of students as a high retention rate would indicate mechanisms are in place to ensure all is being done to retain the student at the University.

#### 4.2.1. Gender

Females have a slightly higher retention rate than males at DMU. In 2008/09, 86% of females and 84% of males were retained.

#### 4.2.2. Age

Younger students (21 and under) have a higher retention rate than older students (30 and over). In 2008/09, 88% of young students were retained as opposed to only 77% of older students. Older students could be on part-time and/or postgraduate programmes which could explain the lower retention.

#### 4.2.3. Ethnicity

The retention rate of BME students has increased slightly from 83% in 2006/07 to 84% in 2008/09. **(Note: the 2008/09 BME retention rate value has been revised from 77% to 84%. The original value was incorrect).**

The retention of white students increased from 84% to 86% in the same period. The most notable decrease has occurred in the 'Mixed – British and Black African' student group, which saw 25% pt. drop. The 'Black or Black British – Caribbean' student group has the lowest retention rates over the last 3 years.

#### 4.2.4. Disability

The retention rate for students with a disability increased from 82% in 2006/07 to 84% in 2008/09, while students with no disability slightly increased from 84% to 85% in the same period.

### 4.3. Progression

Progression is a measure of the students that are actively studying and are on the next programme year. The following analysis looks at the profile of full time first degree students and their progression rates. This analysis focuses on the movement into the next academic session and doesn't consider any other years. First degree students are undergraduate students on a degree level programme.

Progression is when a student moves from one level to the next, and reflects students passing enough of their assessments to move on to the next level and return to the University to continue their studies.

The data analysed is from 2006/07 to 2008/09 only because of the progression calculation method – see the retention and progression report for more details. National data on progression by student profile is not available.

#### 4.3.1. Gender

Progression rates for both gender groups have increased over the last 3 years, however a higher proportion of female students progress at DMU than male students. In 2008/09, 84% of female students progressed as opposed to only 77% of males.

#### 4.3.2. Age

Progression rates have increased for all age groups over the last 3 years; younger students have a higher progression rate than older students. In 2008/09, 83% of young student progressed while 81% of older students progressed.

#### 4.3.3. Ethnicity

Progression rates for BME students have increased from 73% in 2006/07 to 77% in 2008/09, while for white students the rates have increased from 79% to 84% over the same period.

The most significant increase has been in Asian British – Pakistani student group from 61% in 2006/07 to 74% progression rate in 2008/09.

#### 4.3.4. Disability

The progression of students with a disability increased from 76% in 2006/07 to 79% in 2008/09, while for student with no disability the increase was 76% to 81% over the same period.

Students with mental health difficulties have the lowest progression rates, 67% in 2008/09.

### 4.4. Drop-out

Dropout is a measure of students leaving during the academic session. The following analysis looks at the profile of all students that drop out of DMU within the year. A student is classed as a drop-out if they withdraw before 31 July each year.



This analysis focuses on the movement into the next academic session. The report doesn't consider any other years. For this reason the retention and progression figures are always one session behind the dropout figures. Persistently high drop-out rates for particular groups of students could indicate discrimination or lack of support in their studies. Drop –out data is available from 2007/08 to 2009/10.

National data on drop out rates by student profile is not available. However, continuation status statistics, which looks at the status of the student in HE from one year to the next, is available.

#### **4.4.1. Gender**

More male students drop-out than female students. In 2009/10, 5% of females dropped out as opposed to 7% of males. The rates have remained the same for both genders over the last 3 years.

#### **4.4.2. Age**

A higher proportion of younger students (20 and under) drop out than older students (30 and over). In 2009/10, 6% of younger students dropped out as opposed to 4.5% of older students. The rates have remained the same for both genders over the last 3 years.

#### **4.4.3. Ethnicity**

The drop-out rate of BME students has slightly decreased from 8% in 2007/08 to 7% in 2009/10, while the rate remained the same at 5% for white students over the period.

The Black British – African student group had a drop-out rate of 10.5% in 2009/10 – which is significant considering there are over 1,500 students in the group.

#### **4.4.4. Disability**

The drop-out rate for students with a disability has remained the same over the last 3 years at 6%. Students with mental health difficulties had the highest drop out rates in 2009/10 (11%).

### **4.5. Good Honours (degree classification)**

The following analysis looks at the profile of final year students and the proportion that achieve a first or upper second class degree classification (good honours). The analysis is for undergraduate students only.

A full breakdown of ethnicity by 1<sup>st</sup> and 2<sup>nd</sup> achievement is shown in the appendix, while breakdown by department and faculty can be accessed via the EIP – contact SPS for details

#### **4.5.1. Gender**

Nationally, a higher proportion of female qualifiers obtain a good honours degree classification than male qualifiers (60% females and 55% males). (Heidi).

There is a similar picture in DMU, in 2009/10, 53% of females achieved a good honours degree while 46% of males achieved the same.

### 4.5.2. Age

Nationally in 2009/10, 58% of qualifiers aged 21 and over (mature) on 31 July 2009 achieved a good honours degree, while 60% of qualifiers aged 20 and under (young) achieved a good honours degree classification. (Heidi)

In DMU, a higher proportion of young students achieve good honours compared to mature students. Over the last three years the proportion of mature students achieving a good honours classification has decreased. In 2007/08, 53% of mature qualifiers had good honours and in 2009/10 it was 46%. The rate for young qualifiers remained at 53% over the period.

### 4.5.3. Ethnicity

Nationally, the difference between the proportion of white first degree qualifiers who obtained a first class honours or upper second class honours degree and that of BME first degree qualifiers (the attainment gap) has been around 17% over the last 4 years. (Heidi)

**Figure 6: DMU first degree attainment gap**

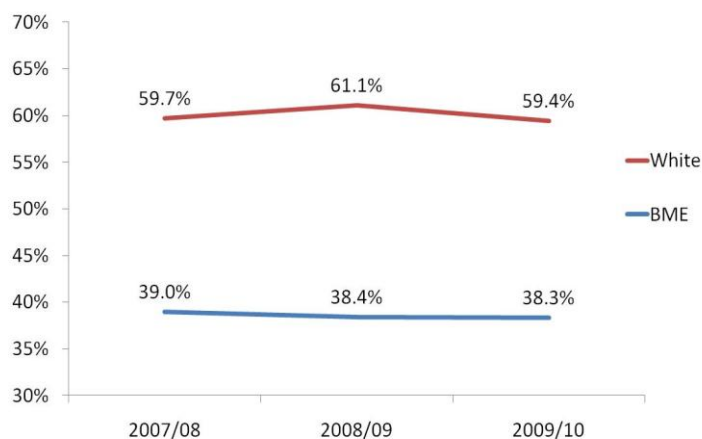


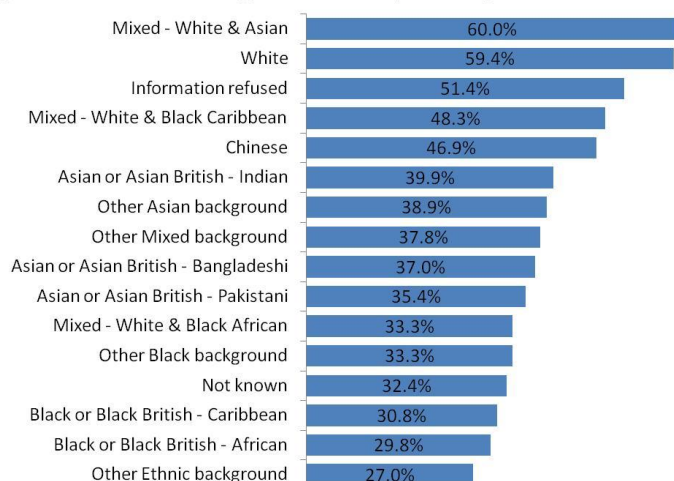
Figure 6 shows that in DMU, the attainment gap increased from 20.7% in 2007/08 to 22.7% in 2008/09, and then decreased to 21.1% in 2009/10.

The university Retention & Achievement of Ethnic Minority Students (RAEMS) working group has undertaken quantitative and qualitative research to better understand differences in student achievement at DMU.

For further details please contact [Nick Allsopp](#)

Chart 6a shows the full ethnicity breakdown in DMU and the proportion that achieve a good honours degree classification.

**Figure 6a: DMU student % good honours by ethnicity**



Note: Analysis (except academic performance an:

Students within the 'Mixed – White and Asian' or 'White' ethnicity category had the highest proportion of good honours.

Students with a 'Black' ethnicity background had the least proportion achieving good honours.

#### **4.5.4. Disability**

Nationally, the proportion of 2009/10 academic year qualifiers known to have a disability with a good honours degree was 56% compared to 59% of qualifiers not known to have a disability. 56% of qualifiers with a specific learning difficulty e.g. dyslexia mental health difficulties obtained good honours degree. (Heidi)

In DMU, the rate of achieving good honours amongst students with disabilities has not changed over the period, with 48% achieving good honours. However, approximately 51% of students with no disabilities achieve good honours. Around 46% of students with a specific learning difficulty e.g. dyslexia, achieve good honours.

### **5. Detailed analysis of student continuation status and achievement**

SPS has purchased a national dataset from HESA which shows the continuation status and achievement of students for the last 4 years by HEI, subject and student diversity element. A report will be specified, in conjunction with the RAEMS group, which uses this dataset and is planned for release in April 2012.

This full dataset is available on request from SPS.

# APPENDICES

## Recruitment Profile

### Enrolments

#### All DMU Students

Gender

Home (UK) Undergraduate Students

Mode	Gender	2007-08		2008-09		2009-10	
Full time	Female	7,374	57.2%	7,205	56.5%	7,571	55.3%
	Male	5,528	42.8%	5,548	43.5%	6,119	44.7%
Full Time Total		12,902	100%	12,753	100%	13,690	100%
Part time	Female	1,867	63.7%	2,000	63.7%	2,124	63.3%
	Male	1,064	36.3%	1,140	36.3%	1,233	36.7%
Part Time Total		2,931	100%	3,140	100%	3,357	100%
All	Female	9,241	58%	9,205	58%	9,695	57%
	Male	6,592	42%	6,688	42%	7,352	43%
Total Home (UK) UG		15,833	100%	15,893	100%	17,047	100%

Home (UK) Postgraduate Taught Students

Mode	Gender	2007-08		2008-09		2009-10	
Full time	Female	137	52.5%	160	53.9%	140	46.2%
	Male	124	47.5%	137	46.1%	163	53.8%
Full Time Total		261	100%	297	100%	303	100%
Part time	Female	1,299	61.4%	1,441	62.8%	1,463	60.9%
	Male	815	38.6%	852	37.2%	939	39.1%
Part Time Total		2,114	100%	2,293	100%	2,402	100%
All	Female	1,436	60%	1,601	62%	1,603	59%
	Male	939	40%	989	38%	1,102	41%
Total Home (UK) PGT		2,375	100%	2,590	100%	2,705	100%

Note: Analysis (except academic performance analysis) excludes not known/information refused categories.

## Home (UK) Postgraduate Research Students

Mode	Gender	2007-08		2008-09		2009-10	
Full time	Female	26	46.4%	18	39.1%	19	33.3%
	Male	30	53.6%	28	60.9%	38	66.7%
Full Time Total		56	100%	46	100%	57	100%
Part time	Female	53	47.7%	52	46.8%	65	48.1%
	Male	58	52.3%	59	53.2%	70	51.9%
Part Time Total		111	100%	111	100%	135	100%
All	Female	79	47%	70	45%	84	44%
	Male	88	53%	87	55%	108	56%
Total Home (UK) PGR		167	100%	157	100%	192	100%

## International Students (all Overseas and EU students)

Mode	Gender	2007-08		2008-09		2009-10	
Full time	Female	560	43.7%	588	41.4%	755	41.9%
	Male	721	56.3%	832	58.6%	1,048	58.1%
Full Time Total		1,281	100%	1,420	100%	1,803	100%
Part time	Female	143	43.7%	149	40.6%	194	41.3%
	Male	184	56.3%	218	59.4%	276	58.7%
Part Time Total		327	100%	367	100%	470	100%
All	Female	703	44%	737	41%	949	42%
	Male	905	56%	1,050	59%	1,324	58%
Total International		1,608	100%	1,787	100%	2,273	100%

## Age Group

### Home (UK) Undergraduates

Mode	Age Group	2007-08		2008-09		2009-10	
Full Time	18-20	7,415	57.5%	7,086	55.6%	7,843	57.3%
	21-24	1,710	13.3%	1,804	14.1%	1,869	13.7%
	25-29	667	5.2%	705	5.5%	639	4.7%
	30 years and over	1,163	9.0%	1,149	9.0%	1,158	8.5%
	Not Known	1,936	15.0%	1,996	15.7%	2,162	15.8%
	Under 18	11	0.1%	13	0.1%	19	0.1%
Full Time Total		12,902	100%	12,753	100%	13,690	100%
Part Time	18-20	220	7.5%	179	5.7%	192	5.7%
	21-24	402	13.7%	417	13.3%	468	13.9%
	25-29	431	14.7%	440	14.0%	477	14.2%
	30 years and over	1,680	57.3%	1,926	61.3%	2,014	60.0%
	Not Known	191	6.5%	172	5.5%	192	5.7%
	Under 18	7	0.2%	6	0.2%	14	0.4%
Part Time Total		2,931	100%	3,140	100%	3,357	100%
All	18-20	7,635	48.2%	7,265	45.7%	8,035	47.1%
	21-24	2,112	13.3%	2,221	14.0%	2,337	13.7%
	25-29	1,098	6.9%	1,145	7.2%	1,116	6.5%
	30 years and over	2,843	18.0%	3,075	19.3%	3,172	18.6%
	Not Known	2,127	13.4%	2,168	13.6%	2,354	13.8%
	Under 18	18	0.1%	19	0.1%	33	0.2%
Total Home (UK) UG		15,833	100%	15,893	100%	17,047	100%

Note: Analysis (except academic performance analysis) excludes not known/information refused categories.

## Home (UK) Postgraduate Taught Students

- Table removed due to small numbers in some categories. If you are a DMU member of staff and require this detail please contact Prash Desai in SPS



## Home (UK) Postgraduate Research Students

- Table removed due to small numbers in some categories. If you are a DMU member of staff and require this detail please contact Prash Desai in SPS

#### International Students (all Overseas and EU students)

- Table removed due to small numbers in some categories. If you are a DMU member of staff and require this detail please contact Prash Desai in SPS

## Ethnicity

### Home (UK) Undergraduates

Mode	Ethnicity	2007-08		2008-09		2009-10	
Full Time	Missing	0	0.0%	0	0.0%	0	0.0%
	Asian or Asian British - Bangladeshi	154	1.2%	160	1.3%	160	1.2%
	Asian or Asian British - Indian	2,742	21.3%	2,629	20.6%	2,659	19.4%
	Asian or Asian British - Pakistani	614	4.8%	639	5.0%	669	4.9%
	Black or Black British - African	599	4.6%	755	5.9%	1,067	7.8%
	Black or Black British - Caribbean	274	2.1%	313	2.5%	398	2.9%
	Chinese	98	0.8%	71	0.6%	76	0.6%
	Information refused	68	0.5%	77	0.6%	109	0.8%
	Mixed - White & Asian	110	0.9%	110	0.9%	144	1.1%
	Mixed - White & Black African	29	0.2%	40	0.3%	46	0.3%
	Mixed - White & Black Caribbean	117	0.9%	136	1.1%	176	1.3%
	Not known	72	0.6%	26	0.2%	12	0.1%
	Other Asian background	234	1.8%	245	1.9%	253	1.8%
	Other Black background	55	0.4%	57	0.4%	68	0.5%
	Other Ethnic background	112	0.9%	108	0.8%	104	0.8%
	Other Mixed background	118	0.9%	118	0.9%	130	0.9%
	White	7,506	58.2%	7,269	57.0%	7,619	55.7%
Full Time Total		12,902	100%	12,753	100%	13,690	100%
Part Time	Missing	0	0.0%	0	0.0%	0	0.0%
	Asian or Asian British - Bangladeshi	17	0.6%	16	0.5%	14	0.4%
	Asian or Asian British - Indian	212	7.2%	199	6.3%	255	7.6%
	Asian or Asian British - Pakistani	73	2.5%	55	1.8%	36	1.1%
	Black or Black British - African	139	4.7%	155	4.9%	144	4.3%
	Black or Black British - Caribbean	49	1.7%	51	1.6%	51	1.5%
	Chinese	10	0.3%	9	0.3%	7	0.2%
	Information refused	20	0.7%	14	0.4%	16	0.5%
	Mixed - White & Asian	10	0.3%	15	0.5%	15	0.4%
	Mixed - White & Black African	9	0.3%	10	0.3%	10	0.3%
	Mixed - White & Black Caribbean	16	0.5%	18	0.6%	19	0.6%
	Not known	42	1.4%	22	0.7%	22	0.7%
	Other Asian background	71	2.4%	95	3.0%	97	2.9%
	Other Black background	16	0.5%	15	0.5%	10	0.3%
	Other Ethnic background	31	1.1%	34	1.1%	25	0.7%
	Other Mixed background	13	0.4%	10	0.3%	14	0.4%
	White	2,203	75.2%	2,422	77.1%	2,622	78.1%
Part Time Total		2,931	100%	3,140	100%	3,357	100%
All	Missing	0	0.0%	0	0.0%	0	0.0%
	Asian or Asian British - Bangladeshi	171	1.1%	176	1.1%	174	1.0%
	Asian or Asian British - Indian	2,954	18.7%	2,828	17.8%	2,914	17.1%
	Asian or Asian British - Pakistani	687	4.3%	694	4.4%	705	4.1%
	Black or Black British - African	738	4.7%	910	5.7%	1,211	7.1%
	Black or Black British - Caribbean	323	2.0%	364	2.3%	449	2.6%
	Chinese	108	0.7%	80	0.5%	83	0.5%
	Information refused	88	0.6%	91	0.6%	125	0.7%
	Mixed - White & Asian	120	0.8%	125	0.8%	159	0.9%
	Mixed - White & Black African	38	0.2%	50	0.3%	56	0.3%
	Mixed - White & Black Caribbean	133	0.8%	154	1.0%	195	1.1%
	Not known	114	0.7%	48	0.3%	34	0.2%
	Other Asian background	305	1.9%	340	2.1%	350	2.1%
	Other Black background	71	0.4%	72	0.5%	78	0.5%
	Other Ethnic background	143	0.9%	142	0.9%	129	0.8%
	Other Mixed background	131	0.8%	128	0.8%	144	0.8%
	White	9,709	61.3%	9,691	61.0%	10,241	60.1%
Total Home (UK) UG		15,833	100%	15,893	100%	17,047	100%

Note: Analysis (except academic performance analysis) excludes not known/information refused categories.

#### Home (UK) Postgraduate Taught Students

- Table removed due to small numbers in some categories. If you are a DMU member of staff and require this detail please contact Prash Desai in SPS

#### Home (UK) Postgraduate Research Students

- Table removed due to small numbers in some categories. If you are a DMU member of staff and require this detail please contact Prash Desai in SPS

#### International Students (all Overseas and EU students)

- Table removed due to small numbers in some categories. If you are a DMU member of staff and require this detail please contact Prash Desai in SPS

## Disability

### Home (UK) Undergraduates

- Table removed due to small numbers in some categories. If you are a DMU member of staff and require this detail please contact Prash Desai in SPS

### Home (UK) Postgraduate Taught Students

- Table removed due to small numbers in some categories. If you are a DMU member of staff and require this detail please contact Prash Desai in SPS

### Home (UK) Postgraduate Research Students

- Table removed due to small numbers in some categories. If you are a DMU member of staff and require this detail please contact Prash Desai in SPS

### International Students (all Overseas and EU students)

- Table removed due to small numbers in some categories. If you are a DMU member of staff and require this detail please contact Prash Desai in SPS

# Applications, Accepts, New Enrolments Profiles

## All Home (UK) Full Time Undergraduate students

### Gender

	2008/09						2009/10						2010/11					
Gender	Applications		Accepts		New Enrols		Applications		Accepts		New Enrols		Applications		Accepts		New Enrols	
Female	9,714	58%	3,572	58%	2,518	56%	11,145	57%	4,178	57%	2,990	53%	14,379	57%	4,286	55%	2,431	57%
Male	7,016	42%	2,549	42%	2,014	44%	8,327	43%	3,114	43%	2,624	47%	10,969	43%	3,514	45%	1,838	43%
Total	16,730	100%	6,121	100%	4,532	100%	19,472	100%	7,292	100%	5,614	100%	25,348	100%	7,800	100%	4,269	100%

### Age

	2008/09						2009/10						2010/11					
Age	Applications		Accepts		New Enrols		Applications		Accepts		New Enrols		Applications		Accepts		New Enrols	
18-20	11,791	70%	4,382	72%	2,738	60%	13,759	71%	5,272	72%	3,684	66%	18,384	73%	6,027	77%	2,930	69%
21-24	1,485	9%	501	8%	605	13%	1,697	9%	573	8%	643	11%	2,000	8%	469	6%	387	9%
25-29	472	3%	152	2%	190	4%	517	3%	160	2%	185	3%	637	3%	140	2%	123	3%
30 years and over	824	5%	286	5%	317	7%	1,047	5%	368	5%	329	6%	1,185	5%	206	4%	255	6%
Not Known	1,483	9%	552	9%	563	12%	1,641	8%	615	8%	595	11%	2,024	8%	496	6%	386	9%
Under 18	675	4%	248	4%	119	3%	811	4%	304	4%	178	3%	1,118	4%	372	5%	188	4%
Total	16,730	100%	6,121	100%	4,532	100%	19,472	100%	7,292	100%	5,614	100%	25,348	100%	7,800	100%	4,269	100%

### Ethnicity

	2008/09						2009/10						2010/11					
Ethnicity	Applications		Accepts		New Enrols		Applications		Accepts		New Enrols		Applications		Accepts		New Enrols	
Asian or Asian British - Bangladeshi	122	1%	55	1%	66	1%	104	1%	58	1%	63	1%	83	0%	58	1%	56	1%
Asian or Asian British - Indian	1,515	9%	747	12%	930	21%	1,696	9%	881	12%	1,037	18%	1,273	5%	704	9%	710	17%
Asian or Asian British - Pakistani	389	2%	193	3%	282	6%	453	2%	229	3%	290	5%	305	1%	178	2%	195	5%
Black or Black British - African	563	3%	253	4%	365	8%	753	4%	378	5%	542	10%	582	2%	325	4%	386	9%
Black or Black British - Caribbean	182	1%	117	2%	119	3%	254	1%	179	2%	208	4%	182	1%	112	1%	128	3%
Chinese	29	0%	18	0%	20	0%	45	0%	28	0%	36	1%	45	0%	27	0%	27	1%
Information refused	50	0%	25	0%	25	1%	93	0%	59	1%	57	1%	36	0%	20	0%	18	0%
Mixed - White & Asian	55	0%	37	1%	37	1%	108	1%	70	1%	74	1%	77	0%	58	1%	50	1%
Mixed - White & Black African	33	0%	20	0%	23	1%	26	0%	18	0%	21	0%	25	0%	13	0%	16	0%
Mixed - White & Black Caribbean	84	1%	62	1%	59	1%	110	1%	70	1%	77	1%	116	0%	75	1%	67	2%
Not known	10,030	60%	1,967	32%	8	0%	11,421	59%	2,255	31%	7	0%	18,701	74%	3,429	44%	0	0%
Other Asian background	186	1%	109	2%	120	3%	191	1%	97	1%	137	2%	162	1%	92	1%	99	2%
Other Black background	33	0%	17	0%	22	0%	42	0%	27	0%	29	1%	30	0%	18	0%	16	0%
Other Ethnic background	15	0%	9	0%	16	0%	12	0%	7	0%	13	0%	11	0%	5	0%	8	0%
Other Mixed background	53	0%	38	1%	34	1%	94	0%	60	1%	70	1%	50	0%	39	1%	37	1%
White	3,391	20%	2,454	40%	2,406	53%	4,070	21%	2,876	39%	2,953	53%	3,670	14%	2,647	34%	2,456	58%
Total	16,730	100%	6,121	100%	4,532	100%	19,472	100%	7,292	100%	5,614	100%	25,348	100%	7,800	100%	4,269	100%

Note: Analysis (except academic performance analysis) excludes not known/information refused categories.

## DMU UCAS Applications by Ethnicity for 2010/11 Entry

Ethnicity	Applications	Proportion of Total
White	15039	59%
Black - Caribbean	887	3%
Black - African	2529	10%
Black - Other black background	148	1%
Asian - Indian	3178	13%
Asian - Pakistani	1345	5%
Asian - Bangladeshi	305	1%
Asian - Chinese	147	1%
Asian - Other Asian background	384	2%
Mixed - White and Black Caribbean	410	2%
Mixed - White and Black African	111	0%
Mixed - White and Asian	250	1%
Mixed - Other mixed background	262	1%
Other ethnic background	225	1%
Unknown or Prefer Not To Say	192	1%
<b>Total</b>	<b>25412</b>	<b>100%</b>

Source: UCAS Management Statistics

## Disability

Disability	2008/09						2009/10						2010/11					
	Applications		Accepts		New Enrols		Applications		Accepts		New Enrols		Applications		Accepts		New Enrols	
A disability not listed	223	1%	112	2%	103	2%	243	1%	122	2%	132	2%	246	1%	99	1%	86	2%
A specific learning difficulty e.g. dyslexia	841	5%	421	7%	417	9%	907	5%	475	7%	483	9%	307	1%	203	3%	226	5%
An unseen disability, e.g. diabetes, epilepsy	294	2%	153	2%	187	4%	326	2%	182	2%	210	4%	336	1%	162	2%	151	4%
Autistic Spectrum Disorder	31	0%	17	0%	14	0%	55	0%	22	0%	22	0%	67	0%	24	0%	16	0%
Blind/partially sighted	38	0%	19	0%	13	0%	32	0%	8	0%	8	0%	24	0%	6	0%	5	0%
Deaf/hearing impairment	40	0%	16	0%	12	0%	60	0%	26	0%	21	0%	53	0%	16	0%	13	0%
Mental health difficulties	138	1%	75	1%	91	2%	148	1%	79	1%	87	2%	158	1%	69	1%	53	1%
No known disability	15,093	90%	5,295	87%	3,681	81%	17,661	91%	6,361	87%	4,634	83%	24,108	95%	7,200	92%	3,705	87%
Wheelchair user/have mobility difficulties	32	0%	13	0%	14	0%	40	0%	17	0%	17	0%	49	0%	21	0%	14	0%
<b>Total</b>	<b>16,730</b>	<b>100%</b>	<b>6,121</b>	<b>100%</b>	<b>4,532</b>	<b>100%</b>	<b>19,472</b>	<b>100%</b>	<b>7,292</b>	<b>100%</b>	<b>5,614</b>	<b>100%</b>	<b>25,348</b>	<b>100%</b>	<b>7,800</b>	<b>100%</b>	<b>4,269</b>	<b>100%</b>

## Conversion Rates

### All Home (UK) Full Time Undergraduate students

#### Gender

Gender	2008/09		2009/10		2010/11	
	Apps to Accept	Apps to Enrol	Apps to Accept	Apps to Enrol	Apps to Accept	Apps to Enrol
Female	2.7	5.2	2.7	4.4	3.4	6.2
Male	2.8	4.4	2.7	3.6	3.1	6.6
<b>Total</b>	<b>2.7</b>	<b>4.8</b>	<b>2.7</b>	<b>4</b>	<b>3.2</b>	<b>6.4</b>

Note: Analysis (except academic performance analysis) excludes not known/information refused categories.



## Age

	2008/09		2009/10		2010/11	
Age Group	Apps to Accept	Apps to Enrol	Apps to Accept	Apps to Enrol	Apps to Accept	Apps to Enrol
18-20	2.7	5.0	2.6	4.0	3.1	6.5
21-24	3.0	4.1	3.0	3.7	4.3	6.5
25-29	3.1	4.5	3.2	3.9	4.6	6.4
30 years and over	2.9	4.7	2.8	4.9	4.0	5.3
Not Known	2.7	4.3	2.7	3.6	4.1	6.5
Under 18	2.7	5.9	2.7	4.7	3.0	5.9
<b>Total</b>	<b>2.7</b>	<b>4.8</b>	<b>2.7</b>	<b>4</b>	<b>3.2</b>	<b>6.4</b>

## Ethnicity

	2008/09		2009/10		2010/11	
Ethnicity	Apps to Accept	Apps to Enrol	Apps to Accept	Apps to Enrol	Apps to Accept	Apps to Enrol
Asian or Asian British - Bangladeshi	2.2	2.4	1.8	1.9	1.4	1.5
Asian or Asian British - Indian	2.0	2.0	1.9	1.8	1.8	2.0
Asian or Asian British - Pakistani	2.0	1.8	2.0	1.7	1.7	1.7
Black or Black British - African	2.2	2.2	2.0	1.7	1.8	1.7
Black or Black British - Caribbean	1.6	2.0	1.4	1.5	1.6	1.6
Chinese	1.6	1.5	1.6	1.3	1.7	1.8
Information refused	2.0	2.4	1.6	1.7	1.8	2.1
Mixed - White & Asian	1.5	2.0	1.5	1.6	1.3	1.6
Mixed - White & Black African	1.7	1.7	1.4	1.5	1.9	1.7
Mixed - White & Black Caribbean	1.4	1.9	1.6	1.7	1.5	1.8
Not known	5.1	N/A	5.1	N/A	5.5	N/A
Other Asian background	1.7	2.2	2.0	1.6	1.8	1.7
Other Black background	1.9	2.4	1.6	1.8	1.7	1.9
Other Ethnic background	1.7	1.7	1.7	1.3	2.2	1.4
Other Mixed background	1.4	2.1	1.6	1.6	1.3	1.4
White	1.4	1.8	1.4	1.6	1.4	1.6
<b>Total</b>	<b>2.7</b>	<b>4.8</b>	<b>2.7</b>	<b>4</b>	<b>3.2</b>	<b>6.4</b>

## Disability

	2008/09		2009/10		2010/11	
Disability	Apps to Accept	Apps to Enrol	Apps to Accept	Apps to Enrol	Apps to Accept	Apps to Enrol
A disability not listed	2.0	2.9	2.0	2.4	2.5	3.2
A specific learning difficulty e.g. dyslexia	2.0	3.0	1.9	2.5	1.5	1.6
An unseen disability, e.g. diabetes, epilepsy	1.9	2.2	1.8	1.8	2.1	2.4
Autistic Spectrum Disorder	1.8	2.8	2.5	2.8	2.8	4.2
Blind/partially sighted	2.0	3.8	4.0	5.3	4.0	4.8
Deaf/hearing impairment	2.5	5.0	2.3	3.8	3.3	4.8
Mental health difficulties	1.8	1.8	1.9	1.9	2.3	3.5
No known disability	2.9	5.3	2.8	4.3	3.3	7.0
Wheelchair user/have mobility difficulties	2.5	3.2	2.4	2.7	2.3	3.8
<b>Total</b>	<b>2.7</b>	<b>4.8</b>	<b>2.7</b>	<b>4</b>	<b>3.2</b>	<b>6.4</b>

Note: Analysis (except academic performance analysis) excludes not known/information refused categories.

# Academic Performance Profile

## Tariff Points on Entry

### All new students

#### Gender

	2007-08				2008-09				2009-10			
	Students with a Tariff	Avg Tariff	Low Tariff	High Tariff	Students with a Tariff	Avg Tariff	Low Tariff	High Tariff	Students with a Tariff	Avg Tariff	Low Tariff	High Tariff
Gender												
Female	2311	233	20	760	2270	232	20	780	2917	249	20	750
Male	1879	205	17	570	1850	195	20	540	2443	227	20	650
Total	4190	220			4120	216			5360	239		

#### Age

	2007-08				2008-09				2009-10			
	Students with a Tariff	Avg Tariff	Low Tariff	High Tariff	Students with a Tariff	Avg Tariff	Low Tariff	High Tariff	Students with a Tariff	Avg Tariff	Low Tariff	High Tariff
Age Group												
Under 18	4	272	120	460	8	142	40	290	7	164	50	341
18-20	2418	228	20	600	2314	226	20	780	3187	248	20	720
21-24	733	216	17	760	750	207	20	580	833	235	20	750
25-29	261	222	20	570	250	214	20	540	277	222	20	640
30 years and over	189	193	30	560	219	190	20	540	285	207	20	600
Not Known	585	202	20	580	579	196	20	580	771	223	20	540
Total	4190	220			4120	216			5360	239		

#### Ethnicity

	2007-08				2008-09				2009-10			
	Students with a Tariff	Avg Tariff	Low Tariff	High Tariff	Students with a Tariff	Avg Tariff	Low Tariff	High Tariff	Students with a Tariff	Avg Tariff	Low Tariff	High Tariff
Ethnicity												
Asian or Asian British - Bangladeshi	55	190	30	390	57	220	40	460	60	238	40	440
Asian or Asian British - Indian	928	205	17	570	854	201	20	490	1036	229	20	640
Asian or Asian British - Pakistani	224	208	20	510	226	200	20	480	239	228	20	720
Black or Black British - African	167	194	20	560	214	197	30	460	407	211	20	520
Black or Black British - Caribbean	72	186	40	500	89	159	20	440	165	218	30	420
Chinese	33	208	20	360	22	161	40	350	42	243	40	520
Information refused	38	210	30	500	30	225	20	490	84	237	40	520
Mixed - White & Asian	39	200	20	400	35	211	40	400	67	245	30	530
Mixed - White & Black African	4	192	80	290	15	251	160	380	19	243	40	390
Mixed - White & Black Caribbean	36	197	40	380	40	185	40	380	63	228	40	400
Not known	17	146	40	290	9	183	40	420	6	216	40	400
Other Asian background	71	204	30	450	95	221	40	780	99	242	30	480
Other Black background	18	149	40	260	17	167	20	440	18	226	50	440
Other Ethnic background	27	202	40	400	28	175	20	410	38	240	72	480
Other Mixed background	35	154	40	480	29	207	30	480	54	258	100	510
White	2426	234	20	760	2360	228	20	580	2963	248	20	750
Total	4190	220			4120	216			5360	239		

Note: Analysis (except academic performance analysis) excludes not known/information refused categories.

## Disability

- Table removed due to small numbers in some categories. If you are a DMU member of staff and require this detail please contact Prash Desai in SPS

## Retention

### All degree students

#### Gender

	2006-07			2007-08			2008-09		
Gender	Retained Students	Total Students	%	Retained Students	Total Students	%	Retained Students	Total Students	%
Female	4400	5162	85.2%	4218	5268	80.1%	4044	4681	86.4%
Male	3400	4169	81.6%	3209	3925	81.8%	3062	3659	83.7%
<b>Total</b>	<b>7800</b>	<b>9331</b>	<b>84%</b>	<b>7427</b>	<b>9193</b>	<b>81%</b>	<b>7106</b>	<b>8340</b>	<b>85%</b>

#### Age

	2006-07			2007-08			2008-09		
Age Group	Retained Students	Total Students	%	Retained Students	Total Students	%	Retained Students	Total Students	%
Under 18	14	17	82.4%	5	5	100.0%	13	13	100.0%
18-20	5245	5927	88.5%	4462	5143	86.8%	4235	4794	88.3%
21-24	847	1139	74.4%	886	1140	77.7%	909	1132	80.3%
25-29	274	408	67.2%	293	430	68.1%	266	345	77.1%
30 years and over	568	801	70.9%	676	1154	58.6%	569	737	77.2%
Not Known	852	1039	82.0%	1105	1321	83.6%	1114	1319	84.5%
<b>Total</b>	<b>7800</b>	<b>9331</b>	<b>84%</b>	<b>7427</b>	<b>9193</b>	<b>81%</b>	<b>7106</b>	<b>8340</b>	<b>85%</b>

## Ethnicity

	2006-07			2007-08			2008-09		
Ethnicity	Retained Students	Total Students	%	Retained Students	Total Students	%	Retained Students	Total Students	%
Asian or Asian British - Bangladeshi	89	102	87.3%	92	109	84.4%	93	111	83.8%
Asian or Asian British - Indian	1,714	1,993	86.0%	1,604	1,880	85.3%	1,473	1,719	85.7%
Asian or Asian British - Pakistani	341	436	78.2%	366	460	79.6%	370	452	81.9%
Black or Black British - African	343	429	80.0%	371	479	77.5%	418	510	82.0%
Black or Black British - Caribbean	158	202	78.2%	169	216	78.2%	160	201	79.6%
Chinese	130	148	87.8%	95	116	81.9%	84	96	87.5%
Information refused	45	65	69.2%	72	88	81.8%	116	136	85.3%
Mixed - White & Asian	67	83	80.7%	68	80	85.0%	64	70	91.4%
Mixed - White & Black African	20	20	100.0%	18	22	81.8%	18	24	75.0%
Mixed - White & Black Caribbean	57	72	79.2%	55	75	73.3%	71	87	81.6%
Not known	128	156	82.1%	90	126	71.4%	41	48	85.4%
Other Asian background	174	206	84.5%	161	214	75.2%	159	199	79.9%
Other Black background	34	44	77.3%	36	52	69.2%	37	44	84.1%
Other Ethnic background	86	96	89.6%	71	102	69.6%	74	89	83.1%
Other Mixed background	61	75	81.3%	72	87	82.8%	55	69	79.7%
Other White background	113	149	75.8%	0	0	.0%	0	0	.0%
White	4	7	57.1%	4,087	5,087	80.3%	3,873	4,485	86.4%
White - British	4,187	4,983	84.0%	0	0	.0%	0	0	.0%
White - Irish	25	31	80.6%	0	0	.0%	0	0	.0%
White Scottish	24	34	70.6%	0	0	.0%	0	0	.0%
<b>Total</b>	<b>7,800</b>	<b>9,331</b>	<b>84%</b>	<b>7,427</b>	<b>9,193</b>	<b>81%</b>	<b>7,106</b>	<b>8,340</b>	<b>85%</b>

## Disability

	2006-07			2007-08			2008-09		
Disability	Retained Students	Total Students	%	Retained Students	Total Students	%	Retained Students	Total Students	%
A disability not listed above	117	146	80.1%	125	156	80.1%	112	139	80.6%
A specific learning difficulty e.g. dyslexia	0	0	.0%	464	588	78.9%	417	489	85.3%
An unseen disability, e.g. diabetes, epilepsy, asthma	364	435	83.7%	345	452	76.3%	320	382	83.8%
Autistic Spectrum Disorder	9	11	81.8%	12	13	92.3%	21	21	100.0%
Blind/are partially sighted	26	29	89.7%	0	0	.0%	0	0	.0%
Blind/partially sighted	0	0	.0%	17	18	94.4%	17	20	85.0%
Deaf/have a hearing impairment	29	33	87.9%	0	0	.0%	0	0	.0%
Deaf/hearing impairment	0	0	.0%	30	41	73.2%	22	27	81.5%
Dyslexia	365	437	83.5%	0	0	.0%	0	0	.0%
Mental health difficulties	17	25	68.0%	12	29	41.4%	28	37	75.7%
Multiple disabilities	42	59	71.2%	49	66	74.2%	44	55	80.0%
No known disability	6,814	8,133	83.8%	6,353	7,808	81.4%	6,107	7,147	85.4%
Wheelchair user/have mobility difficulties	17	23	73.9%	20	22	90.9%	16	21	76.2%
<b>Total</b>	<b>7,800</b>	<b>9,331</b>	<b>84%</b>	<b>7,427</b>	<b>9,193</b>	<b>81%</b>	<b>7,106</b>	<b>8,340</b>	<b>85%</b>

Note: Analysis (except academic performance analysis) excludes not known/information refused categories.

## Progression

### All Full Time Degree students

#### Gender

	2006-07			2007-08			2008-09		
Gender	Progressed Students	Total Students	%	Progressed Students	Total Students	%	Progressed Students	Total Students	%
Female	3612	4514	80.0%	3422	4242	80.7%	3508	4187	83.8%
Male	2613	3651	71.6%	2528	3380	74.8%	2562	3309	77.4%
<b>Total</b>	<b>6225</b>	<b>8165</b>	<b>76%</b>	<b>5950</b>	<b>7622</b>	<b>78%</b>	<b>6070</b>	<b>7496</b>	<b>81%</b>

#### Age

	2006-07			2007-08			2008-09		
Age Group	Progressed Students	Total Students	%	Progressed Students	Total Students	%	Progressed Students	Total Students	%
Under 18	13	17	76.5%	5	5	100.0%	11	13	84.6%
18-20	4424	5550	79.7%	3828	4749	80.6%	3844	4625	83.1%
21-24	622	931	66.8%	695	964	72.1%	718	981	73.2%
25-29	187	290	64.5%	201	281	71.5%	198	253	78.3%
30 years and over	303	433	70.0%	303	436	69.5%	312	385	81.0%
Not Known	676	944	71.6%	918	1187	77.3%	987	1239	79.7%
<b>Total</b>	<b>6225</b>	<b>8165</b>	<b>76%</b>	<b>5950</b>	<b>7622</b>	<b>78%</b>	<b>6070</b>	<b>7496</b>	<b>81%</b>

#### Ethnicity

	2006-07			2007-08			2008-09		
Ethnicity	Progressed Students	Total Students	%	Progressed Students	Total Students	%	Progressed Students	Total Students	%
Asian or Asian British - Bangladeshi	70	91	76.9%	71	94	75.5%	78	102	76.5%
Asian or Asian British - Indian	1361	1804	75.4%	1317	1664	79.1%	1285	1601	80.3%
Asian or Asian British - Pakistani	247	405	61.0%	278	399	69.7%	312	422	73.9%
Black or Black British - African	282	387	72.9%	264	371	71.2%	343	470	73.0%
Black or Black British - Caribbean	121	179	67.6%	134	189	70.9%	130	182	71.4%
Chinese	119	140	85.0%	88	110	80.0%	81	94	86.2%
Information refused	32	62	51.6%	55	77	71.4%	104	129	80.6%
Mixed - White & Asian	52	76	68.4%	62	75	82.7%	55	66	83.3%
Mixed - White & Black African	15	19	78.9%	14	18	77.8%	15	23	65.2%
Mixed - White & Black Caribbean	44	64	68.8%	42	68	61.8%	65	84	77.4%
Not known	106	136	77.9%	72	94	76.6%	35	41	85.4%
Other Asian background	124	172	72.1%	124	168	73.8%	120	166	72.3%
Other Black background	23	37	62.2%	22	38	57.9%	29	41	70.7%
Other Ethnic background	65	83	78.3%	50	77	64.9%	64	78	82.1%
Other Mixed background	55	72	76.4%	64	82	78.0%	48	66	72.7%
Other White background	82	114	71.9%	0	0	.0%	0	0	.0%
White	3395	4276	79.4%	3293	4098	80.4%	3306	3931	84.1%
White - Irish	17	23	73.9%	0	0	.0%	0	0	.0%
White Scottish	14	23	60.9%	0	0	.0%	0	0	.0%
<b>Total</b>	<b>6225</b>	<b>8165</b>	<b>76%</b>	<b>5950</b>	<b>7622</b>	<b>78%</b>	<b>6070</b>	<b>7496</b>	<b>81%</b>

Note: Analysis (except academic performance analysis) excludes not known/information refused categories.

## Disability

	2006-07			2007-08			2008-09		
Disability	Progressed Students	Total Students	%	Progressed Students	Total Students	%	Progressed Students	Total Students	%
A disability not listed above	92	121	76.0%	96	126	76.2%	85	111	76.6%
A specific learning difficulty e.g. dyslexia	0	0	.0%	385	518	74.3%	361	445	81.1%
An unseen disability, e.g. diabetes, epilepsy, asthma	297	381	78.0%	266	356	74.7%	260	323	80.5%
Autistic Spectrum Disorder	8	11	72.7%	12	13	92.3%	16	18	88.9%
Blind/are partially sighted	20	25	80.0%	0	0	.0%	0	0	.0%
Blind/partially sighted	0	0	.0%	15	16	93.8%	12	17	70.6%
Deaf/have a hearing impairment	28	32	87.5%	0	0	.0%	0	0	.0%
Deaf/hearing impairment	0	0	.0%	21	30	70.0%	15	18	83.3%
Dyslexia	285	388	73.5%	0	0	.0%	0	0	.0%
Mental health difficulties	12	18	66.7%	8	20	40.0%	22	33	66.7%
Multiple disabilities	36	54	66.7%	40	57	70.2%	35	50	70.0%
No known disability	5436	7120	76.3%	5094	6471	78.7%	5251	6462	81.3%
Wheelchair user/have mobility difficulties	11	15	73.3%	13	15	86.7%	11	17	64.7%
<b>Total</b>	<b>6225</b>	<b>8165</b>	<b>76%</b>	<b>5950</b>	<b>7622</b>	<b>78%</b>	<b>6070</b>	<b>7496</b>	<b>81%</b>

## Drop outs

### All Students

### Gender

	2007-08			2008-09			2009-10		
Gender	Dropout Students	Total Students	%	Dropout Students	Total Students	%	Dropout Students	Total Students	%
Female	620	11616	5.3%	584	11822	4.9%	641	12451	5.1%
Male	685	8777	7.8%	637	9087	7.0%	738	10077	7.3%
<b>Total</b>	<b>1305</b>	<b>20393</b>	<b>6.4%</b>	<b>1221</b>	<b>20909</b>	<b>5.8%</b>	<b>1379</b>	<b>22528</b>	<b>6.1%</b>

### Age

	2007-08			2008-09			2009-10		
Age Group	Dropout Students	Total Students	%	Dropout Students	Total Students	%	Dropout Students	Total Students	%
Under 18	0	27	.0%	2	30	6.7%	6	45	13.3%
18-20	518	8155	6.4%	460	7702	6.0%	543	8502	6.4%
21-24	230	3016	7.6%	237	3203	7.4%	263	3530	7.5%
25-29	86	1800	4.8%	96	1984	4.8%	96	2065	4.6%
30 years and over	274	4910	5.6%	228	5468	4.2%	256	5636	4.5%
Not Known	197	2485	7.9%	198	2522	7.9%	215	2750	7.8%
<b>Total</b>	<b>1305</b>	<b>20393</b>	<b>6.4%</b>	<b>1221</b>	<b>20909</b>	<b>5.8%</b>	<b>1379</b>	<b>22528</b>	<b>6.1%</b>

Note: Analysis (except academic performance analysis) excludes not known/information refused categories.

## Ethnicity

	2007-08			2008-09			2009-10		
Ethnicity	Dropout Students	Total Students	%	Dropout Students	Total Students	%	Dropout Students	Total Students	%
Asian or Asian British - Bangladeshi	22	192	11.5%	22	219	10.0%	13	204	6.4%
Asian or Asian British - Indian	253	3496	7.2%	232	3461	6.7%	193	3514	5.5%
Asian or Asian British - Pakistani	70	763	9.2%	70	798	8.8%	55	811	6.8%
Black or Black British - African	120	1060	11.3%	119	1274	9.3%	163	1547	10.5%
Black or Black British - Caribbean	33	381	8.7%	39	435	9.0%	56	523	10.7%
Chinese	18	343	5.2%	13	319	4.1%	21	408	5.1%
Information refused	12	167	7.2%	13	216	6.0%	28	332	8.4%
Mixed - White & Asian	8	137	5.8%	12	147	8.2%	23	188	12.2%
Mixed - White & Black African	6	55	10.9%	4	72	5.6%	6	79	7.6%
Mixed - White & Black Caribbean	19	146	13.0%	20	168	11.9%	19	203	9.4%
Not known	14	302	4.6%	5	181	2.8%	11	145	8.1%
Other Asian background	38	493	7.7%	35	577	6.1%	37	661	5.6%
Other Black background	21	105	20.0%	12	106	11.3%	8	111	7.2%
Other Ethnic background	22	318	6.9%	20	341	5.9%	14	482	2.9%
Other Mixed background	10	153	6.5%	18	163	11.0%	22	194	11.3%
White	639	12282	5.2%	587	12432	4.7%	710	13126	5.4%
<b>Total</b>	<b>1305</b>	<b>20393</b>	<b>6.4%</b>	<b>1221</b>	<b>20909</b>	<b>5.8%</b>	<b>1379</b>	<b>22528</b>	<b>6.1%</b>

## Disability

- Table removed due to small numbers in some categories. If you are a DMU member of staff and require this detail please contact Prash Desai in SPS

## Good Honours (1st and 2i degree classification)

### All final year undergraduate students

## Gender

	2007-08			2008-09			2009-10		
Gender	Total 1st and 2i	Total Qualifiers	% 1st and 2i	Total 1st and 2i	Total Qualifiers	% 1st and 2i	Total 1st and 2i	Total Qualifiers	% 1st and 2i
Female	1,170	2,200	53%	1,033	1,898	54%	1,090	2,050	53%
Male	740	1,531	48%	698	1,466	48%	707	1,543	46%
<b>Total</b>	<b>1,910</b>	<b>3,731</b>	<b>51%</b>	<b>1,731</b>	<b>3,364</b>	<b>51%</b>	<b>1,797</b>	<b>3,593</b>	<b>50%</b>

Note: Analysis (except academic performance analysis) excludes not known/information refused categories.



## Age

- Table removed due to small numbers in some categories. If you are a DMU member of staff and require this detail please contact Prash Desai in SPS

## Ethnicity

- Table removed due to small numbers in some categories. If you are a DMU member of staff and require this detail please contact Prash Desai in SPS

## Disability

	2007-08			2008-09			2009-10		
Disability	Total 1st and 2i	Total Qualifiers	% 1st and 2i	Total 1st and 2i	Total Qualifiers	% 1st and 2i	Total 1st and 2i	Total Qualifiers	% 1st and 2i
No Disability	1,637	3,159	51.8%	1,499	2,880	52.0%	1,505	2,986	50.4%
A disability not listed above	22	58	37.9%	26	52	50.0%	42	79	53.2%
A specific learning difficulty e.g. dyslexia	110	240	45.8%	99	224	44.2%	118	254	46.5%
An unseen disability, e.g. diabetes, epilepsy, asthma	107	194	55.2%	74	136	54.4%	91	177	51.4%
Autistic Spectrum Disorder	2	3	66.7%	2	6	33.3%	3	7	42.9%
Blind/partially sighted	6	12	50.0%	5	8	62.5%	1	10	10.0%
Deaf/hearing impairment	2	12	16.7%	9	17	52.9%	4	11	36.4%
Mental health difficulties	11	16	68.8%	2	6	33.3%	18	34	52.9%
Multiple disabilities	10	32	31.3%	9	20	45.0%	14	31	45.2%
Not known				1	3	33.3%	0	0	.0%
Wheelchair user/mobility difficulties	3	5	60.0%	5	12	41.7%	1	4	25.0%
<b>Total</b>	<b>1,910</b>	<b>3,731</b>	<b>51%</b>	<b>1,731</b>	<b>3,364</b>	<b>51%</b>	<b>1,797</b>	<b>3,593</b>	<b>50%</b>

Note: Analysis (except academic performance analysis) excludes not known/information refused categories.